

Directions from Route 222 North

Traveling on Route 222 North, take the PA-183/Bernville Road exit toward Strausstown on your right. Stay in the left two lanes to make the turn onto Route 183. The right lane will end after the next traffic light—you will need to merge into the left lane.

Stay on Route 183 for approximately 1.1 miles.

Turn left onto W Leesport Road at the CVS traffic light. Follow W Leesport Road for approximately 0.3 miles.

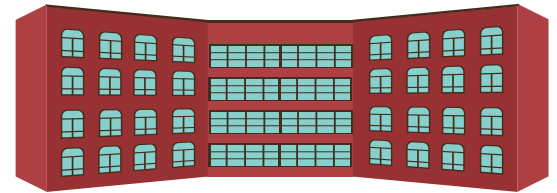
Turn right onto County Welfare Road at the 4-way stop sign. Follow County Welfare Road for approximately 1.3 miles. You will pass the Berks Career and Technology Center (right) and the Berks County Agricultural Center (left).

Turn left onto Berks Road at the triangle intersection. You will see a Camp Joy sign in the center grassy island. Follow Berks Road for approximately 0.1 miles until the first driveway on the left.

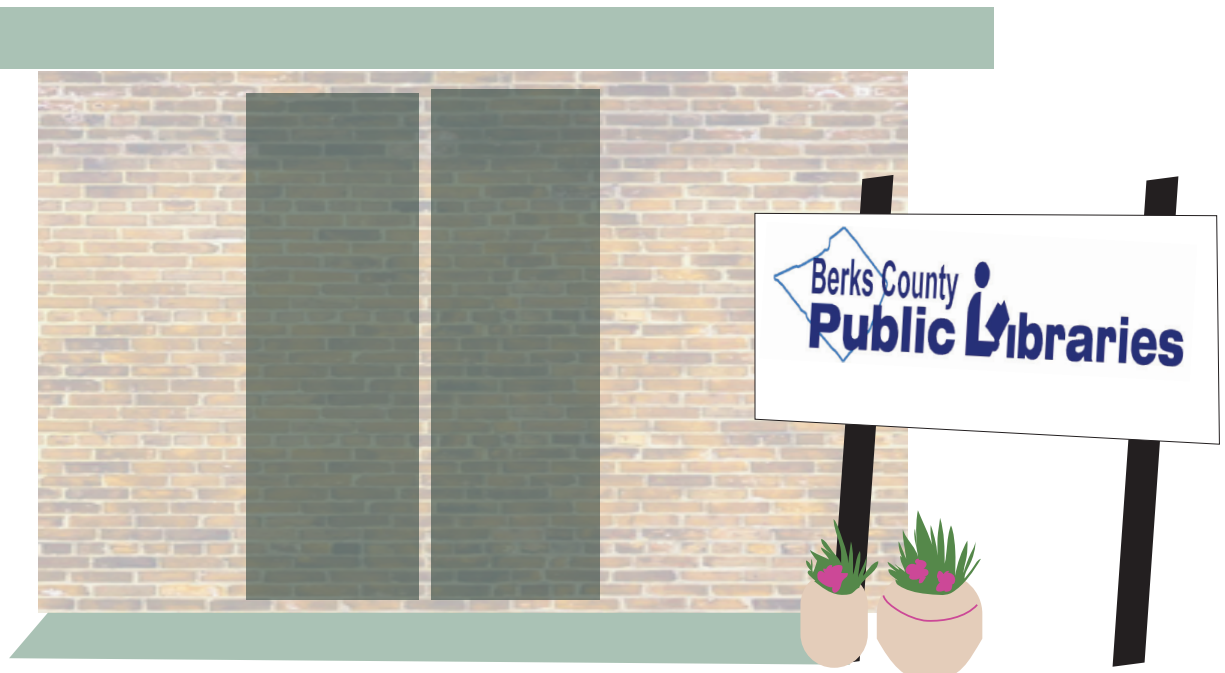
Turn left into the first driveway in front of the Berks County Residential Center (large red building).

Follow the driveway back to the rear parking lot for visitor parking. Please do not park in the row closest to the building.

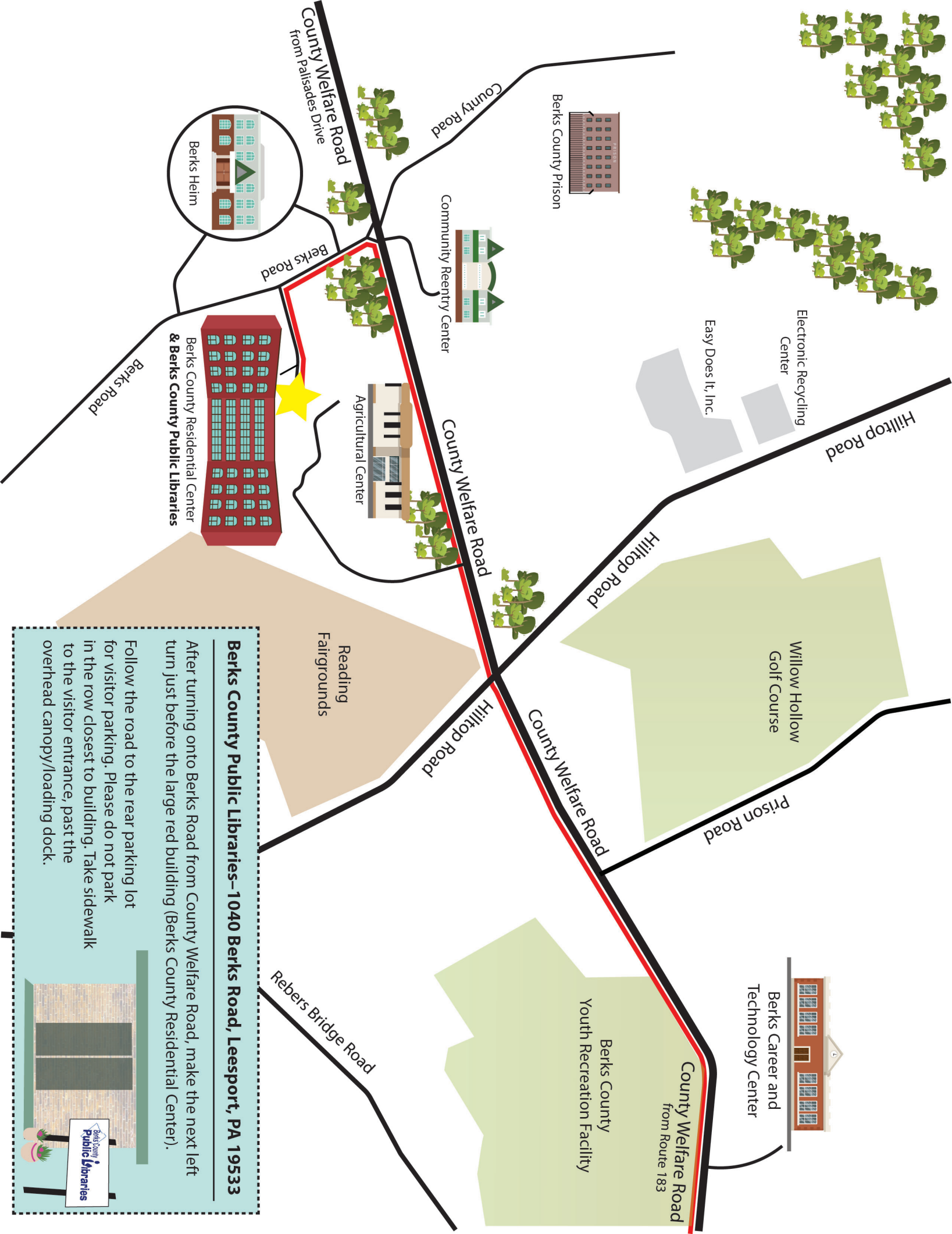
Take the sideway to the visitor entrance past the overhead canopy/loading dock. Walk through the sliding doors and the second set of double doors. The System Headquarters entrance will be on your right. Pick up the phone for someone to unlock the doors.



Berks County Residential Center &
Berks County Public Libraries



BCPL Headquarters
Main Entrance



Berks County Public Libraries—1040 Berks Road, Leesport, PA 19533

After turning onto Berks Road from County Welfare Road, make the next left turn just before the large red building (Berks County Residential Center).

Follow the road to the rear parking lot for visitor parking. Please do not park in the row closest to building. Take sidewalk to the visitor entrance, past the overhead canopy/loading dock.

